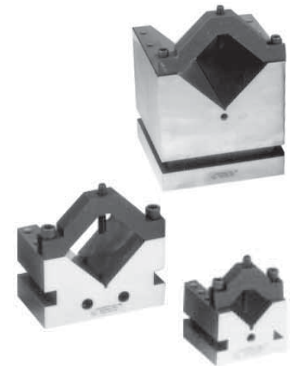




VEE BLOCKS

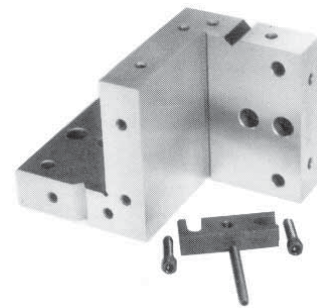
- All V-blocks are parallel, square and central w/ .0002"
- Each block comes with one clamp and block are available in matched pairs.
- All models are made of hardened steel.

MODEL	SIZE			SPECS.		PRICE	
90° V-BLOCK	LENGTH	WIDTH	HEIGHT	CAP.	WT.	EACH	MATCHED PAIR
VB-222-SO	2-1/2"	2-1/2"	2"	1-3/8"	3#	\$139.00	VB-222-M-SO \$336.00
VB-334-S1	3"	4"	3"	2-1/4"	9#	203.00	VB-334-M-S1 446.00
VB-466-S2	6"	6"	4"	4-3/8"	33#	485.00	VB-466-M-S2 1095.00
VB-666	6"	6"	6"	4-3/8"	50#	653.00	VB-666-M 1496.00
60° V-BLOCK							
VB-602-S0	2-1/2"	2-1/2"	3"	1-3/8"	3#	252.00	VB-602-M-S0 615.00
VB-604-S1	3"	4"	3"	2-1/4"	8#	353.00	VB-604-M-S1 796.00



COMPOUND ANGLE PLATE

- Square and parallel w/ .0002"
- Clamp & screws included.
- All holes are tapped or counter-bored.
- Made from steel hardened to RC-58/60.
- Solid, single piece construction provides stable and reliable positioning for compound use.



MODEL	SIZE			SPECS.		PRICE
NUMBER	LENGTH	WIDTH	HEIGHT	THICK	WT.	EACH
CAP-46	6"	4"	4"	1"	11#	\$530.00

ANGLE PLATES

Solid, one piece angle plates are from hardened steel.

MODEL	SIZE			SPECS.		PRICE
NUMBER	LENGTH	WIDTH	HEIGHT	THICK	WT.	EACH
AP-333 *	3"	3"	3"	1"	5#	\$226.00
AP-334-SO	4"	3"	3"	1"	6#	156.00
AP-443-H	4"	4"	3"	1-1/8"	9#	416.00
AP-443-NH	4"	4"	3"	1-1/8"	9#	237.00
AP-444-S1	4"	4"	4"	1-1/4"	10#	237.00
AP-446-S2	6"	4"	4"	1-1/4"	14#	292.00
AP-664-S1	4"	6"	6"	1-1/4"	20#	442.00

- AP-443-H & AP-443-NH are square and parallel w/ .0001".
- All other models are held to .0002"
- AP-443-NH has no holes.
- All other are furnished with tapped holes.

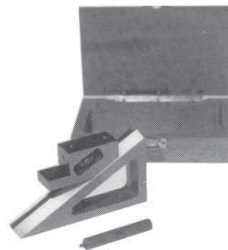


* AP-333 furnished with 1/2" step.



PLANER GAGE

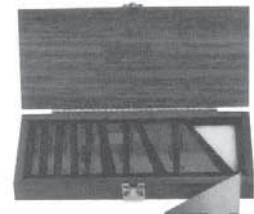
- Extra tapped holes on sliding member for mounting indicator post or other accessories.
- Beveled ways eliminate side play.
- All surfaces square and parallel for use in any plane.
- 3" extension included.
- Fitted wooden case
- .0002" Accuracy



MODEL	RANGE	SPECS.		PRICE	
NUMBER	MIN.	MAX.	WIDE	WT.	EACH
PG-613	1/4"	10"	1-1/8"	11#	\$270.00

ANGLE BLOCKS

- Furnished in 1° increments to 5 degree and in 5° increments to 30 degree.
- Hardened steel precision ground.
- Accuracy ±.0001" per inch.
- With the addition of the optional 1/4° and 1/2° block virtually any conceivable angle to these increments can be established.
- Set complete in fitted case. Size 3" long x 1/4" thick.



MODEL	DESCRIPTION	PRICE
AB-10-ST	Set of 10 Angle Blocks	\$208.00
AB-QTR	Optional 1/4 degree block	22.00
AB-HLF	Optional 1/2 degree block	22.00