

ANGLE PLATES & VEE BLOCKS

SLOTTED ANGLE PLATES

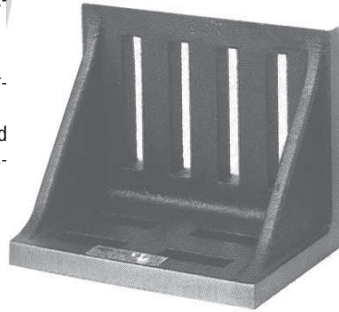
TYPE A (Webbed-end)

have side webs and are accurately machined square and parallel on outside faces and ends.

TYPE B (Open-end)

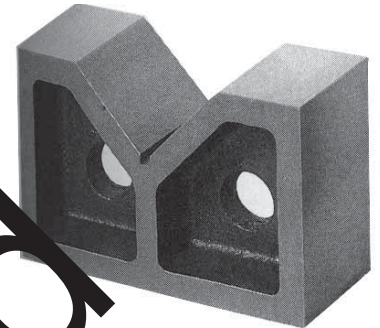
Accurately machined square and parallel on all faces

MATERIAL High quality close-grained grey iron, stress-relieved against distortion by heat-treatment



VEE BLOCKS

Supplied in matched and numbered pairs, these Vee Blocks proved a useful means of holding cylindrical work for layout, inspection, drilling and matching. Each pair is accurately machined with 90 degree vee which is centered in true and square and parallel with base to within .001"



*IPS Brand only

WEBBED END	OPEN END	1 ST. LENGTH	2 ND. ANGLE
E-2 \$27.10	---	3-1/2"	3"
---	E-11 46.20	4-1/2"	3-1/2"
---	E-12 64.20	6"	5"
E-5 66.66	E-13 75.85	7"	5-1/2"
E-7 99.00	---	9"	7"
E-8 118.90	---	10"	8"

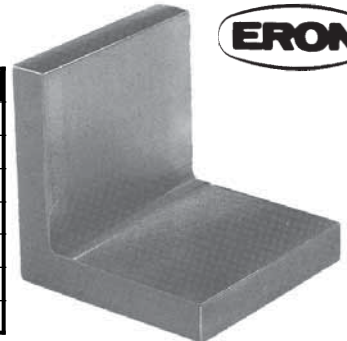
WEBBED END	PRICE P/PAIR	LENGTH BLOCK	THICKNESS BLOCK	HEIGHT BLOCK	WIDTH VEE
E-*B3	\$14.00	3"	1-1/4"	2-3/8"	1-3/4"
E-*B4	20.00	4"	1-5/8"	2-5/8"	2"
E-*B5	30.00	5"	2"	3-1/8"	2-5/8"
E-B6	59.20	6"	2-3/8"	3-5/8"	3-3/4"
E-B7	122.84	7"	3"	4-1/2"	3-3/4"
E-B8	129.60	8"	4"	5-1/2"	4-1/2"
E-B10	242.10	10"	5"	6-1/2"	5"
E-B12	320.00	12"	7"	8"	12"

NON-SLOTTED ANGLE PLATES

Accuracy

Machined (No.22 through 28): General shop and set-ups flat and square .002" per 6"m (0.5mm per 150mm) Precision Ground (No. 29 thru. 37): Layout and inspection flat and square .005" per 6" (.02mm per 150mm) MATERIAL High quality closed-grained cast iron, stress-relieved against distortion by heat-treatment.

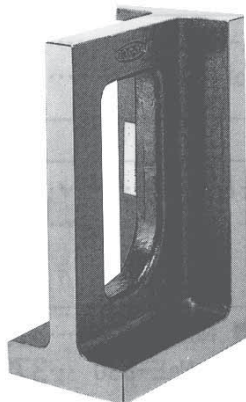
No.	PRICE	No.	PRICE	SQ. SIZE	RIBS
E-21	---	E-31	\$38.25	2 x 2 x 2"	1
E-22	20.95	E-32	43.75	3 x 3 x 3"	1
E-23	32.50	E-33	58.95	4 x 4 x 4"	1
E-24	51.14	E-34	94.10	5 x 5 x 5"	1
E-25	73.14	E-35	140.45	6 x 6 x 6"	2
E-27	248.72	E-37	422.86	10 x 10 x 10"	2
E-28	322.82	---	---	12 x 12 x 12"	2



UNIVERSAL RIGHT ANGLE IRON

Accuracy

Machined: Square and parallel to within .012" per 6" (.03 per 150) Precision Ground: Square to within .0005" per 6" (.02 per 150) Parallel to within .00025" per 6" (.01 per 150) MATERIAL High quality close-grained cast iron, stress-relieved against distortion by heat-treatment.



MACHINED No.	PRECISION GRND. No.	PRICE	PRICE	LENGTH	ANGLE A	ANGLE B	ANGLE C	LBS.
---	UR21P	---	\$140.78	3-3/4"	4"	5"	10	
UR2M 63.75	UR22P	---	157.14	4"	4"	6"	13	
UR3M 71.75	UR23P	---	169.92	4"	5"	6"	16	
UR4M 98.85	UR24P	---	191.76	4-1/2"	5"	8"	21	
UR5M 164.95	UR25P	---	334.84	5"	8"	12"	44	
UR6M 138.43	UR26P	---	290.62	5-1/2"	7"	10"	37	
UR7M 170.00	UR27P	---	254.13	5-1/2"	8"	10"	40	
UR8M 157.00	UR28P	---	242.03	6"	6"	8"	32	
UR9M 154.60	----	---	---	8"	10"	12"	75	
UR10M 297.00	----	---	---	8"	9"	16"	94	
UR11M 569.00	----	---	---	10"	12"	16"	130	
UR12M 768.40	----	---	---	12"	12"	24"	207	