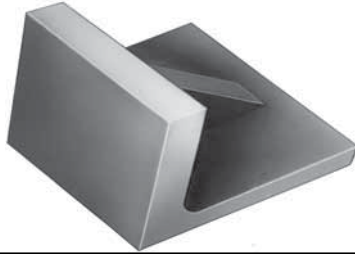




I.P.S. QUALITY SHOP TOOLS

solid angle plates

- Made of High Quality Castings.
- Castings are properly seasoned to avoid distortion.



CAT. #	SIZE	PRICE
MAP-0625	1" x 1" x 1"	\$5.95
MAP-0616	2" x 2" x 2"	8.95

screw pitch gauges

- Very handy Tool for Gaging threads
- Made of high quality Tool Steel
- Comes in a Plastic Pouch



CAT. #	SIZE	THREAD	PRICE
MGS-1114	4 - 42	American	\$5.95
MGS-1117	4 - 84	American	8.95

radius gauges

- Designed for checking radius easier & faster
- Can be used for Inspection, lay out, pattern making and all other machining jobs.
- Ranges from 1/32" to 1/4" and 17/64" to 1/2"



CAT. No.	RANGE	PRICE
MGR-1109	1/32" to 1/4"	\$11.55
MGR-1110	17/64" to 1/2"	14.95

depth gauges

#MGD-0964

- 6" Stainless Steel Rule with hardened and Ground Steel Base
- Spring tension nut for easy depth measurement
- Graduated in inches and m.m.



\$7.75

thickness gauges (feeler gauges)

- Made form Excellent Quality tempered Steel
- Each Leaf is approximately 3-1/2" Long
- Edge of Each Leaf is round



CAT. No.	No. OF LEAVES	RANGE	PRICE
MGT-1111	9	.0015" to .015"	\$2.95
MGT-1112	26	.0015" to .025"	7.50

t-handle tap wrench

- Used in Hand Tapping
- Heavy Knurled Cap for better grip
- Ideal Tool for general Tapping application

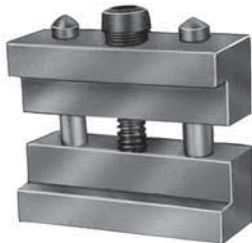


CATALOG NUMBER	TAP CAPACITY	PRICE
MTW-0050	1/16" - 5/32"	4.41
MTW-0051	5/32" - 1/4"	5.25
MTW-0052	1/4" - 1/2"	7.71

work stop

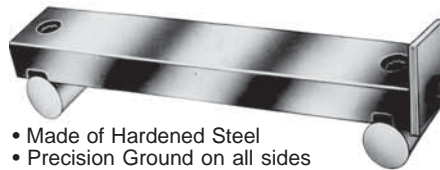
#MQC-1188

- Adjustable, Spring Loaded Clamps for Vises
- Fits all Milling Vises with 3/8" thru 3/4" wide Jaws
- Body 1" wide with 2 Steel Guide Pins for positive clamping.
- Mounts quickly, with one Socket Head Screw.



\$11.95

economy sine bar



- Made of Hardened Steel
- Precision Ground on all sides
- Moderately priced

CAT. #	RANGE	DISTANCE BETWEEN ROLLS	PRICE
MSB-0474	1"	2-1/2"	\$28.95
MSB-0475	1"	5"	29.75

T-HANDLE RATCHET TYPE TAP WRENCH

- Jaws are hardened and tempered
- Shiny Ground finish
- Used in Hand Tapping
- Can also be used with Drills and Reamers



CATALOG NUMBER	TAP CAPACITY	PRICE
MTW-0060	1/16" - 5/32"	\$7.80
MTW-0061	5/32" - 1/4"	10.50
MTW-0062	1/4" - 1/2"	13.50

center gauge

#MGC-0038

- Made of Stainless Steel
- Etched Graduations
- Satin Chrome finish
- Notches have clearance Slots

\$3.95

drill gauges

- Made of Heavy Gauge and Ground Carbon Steel
- Hole Sizes and decimal equivalents permanently etched



CAT. #	FOR DRILL SIZES	PRICE
MGD-0959	A - Z	\$3.25
MGD-0960	1 - 60	3.25
MGD-0961	1/16 - 1/2 BY 64THS	3.25

protractors

- Made of Stainless Steel
- Has Lock Nut
- Measures Angles from 0° to 180°



CAT. #	SIZE	PRICE
MPM-0965	Round Head: 3-1/2" in Diameter	\$9.75
MPM-0966	Rectangular Head: 3-1/2" x 2"	9.75

584

INDUSTRIAL PIPE & STEEL CO.
9936 Rush Street
South El Monte, CA 91733



NATIONWIDE 800-423-4981
Local Number (626) 443-9467
Fax Number (626) 579-4602

584

UPDATE 01-20-06